



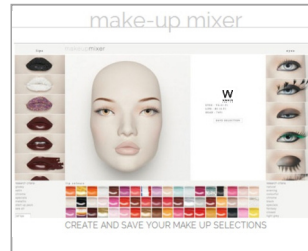
Y3



Y2



Y1 with removable lips F1



<http://www.windowfrance.com/MAKEUP/>



Abstract feet with removable heels ABFT8

Mensurations cm / Measurements inches

Poitrine / bust	81 cm	31 $\frac{7}{8}$ "
Taille / waist	61 cm	24"
Hanches / hips	91 cm	35 $\frac{7}{8}$ "
Hauteur / height	188 cm	6'2"
Talon / heel	10 cm	4"



Confection / Clothing

EUR

Veste / jacket	XS-S / 34-36
Haut / top	XS-S / 34-36
Pantalon / trousers	XS-S / 34-36
Robe / dress	XS-S / 34-36
Sous-vêtements / underwear	85B / 34-36
Pointure / shoes	37-38

Measurements are based on average size of the mannequins in the collection and some positions may vary in size.

Lips not included :
See our [Cameleon Technical Guide Vol.2](#) for lips options.

Foot & calf fittings included.
Buttock & back fittings optional.

