



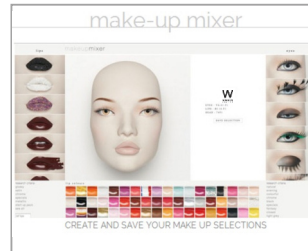
Y3



Y2



Y1 with removable lips F1



Abstract feet with removable heels ABFT8

Mensurations cm / Measurements inches

| | | |
|------------------|--------|--------------------|
| Poitrine / bust | 81 cm | 31 $\frac{7}{8}$ " |
| Taille / waist | 61 cm | 24" |
| Hanches / hips | 91 cm | 35 $\frac{7}{8}$ " |
| Hauteur / height | 188 cm | 6'2" |
| Talon / heel | 10 cm | 4" |



Confection / Clothing

EUR

| | |
|----------------------------|--------------|
| Veste / jacket | XS-S / 34-36 |
| Haut / top | XS-S / 34-36 |
| Pantalon / trousers | XS-S / 34-36 |
| Robe / dress | XS-S / 34-36 |
| Sous-vêtements / underwear | 85B / 34-36 |
| Pointure / shoes | 37-38 |

Measurements are based on average size of the mannequins in the collection and some positions may vary in size.

Lips not included :
See our [Cameleon Technical Guide Vol.2](#) for lips options.

Foot & calf fittings included.
Buttock & back fittings optional.

