

74 cm
2'5 1/8"



171 cm
5'9 3/8"

80 cm
2'7 1/2"

105 cm

3'5 3/8"



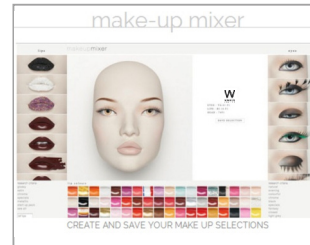
Y3



Y2



Y1 with removable lips F1



<http://www.windowfrance.com/MAKEUP/>



Abstract feet with removable heels ABFT8

WWW.WINDOWFRANCE.COM

COLLECTION 107 SLEEK

Product Reference Sheet

Mensurations cm / Measurements inches

Poitrine / bust	81 cm	31 7/8"
Taille / waist	61 cm	24"
Hanches / hips	91 cm	35 7/8"
Talon / heel	10 cm	4"



Confection / Clothing EUR

Veste / jacket	XS-S / 34-36
Haut / top	XS-S / 34-36
Pantalon / trousers	XS-S / 34-36
Robe / dress	XS-S / 34-36
Sous-vêtements / underwear	85B / 34-36
Pointure / shoes	37-38

Measurements are based on average size of the mannequins in the collection and some positions may vary in size.

Lips not included :
See our [Cameleon Technical Guide Vol.2](#) for lips options.

Back fitting and special base SMB/30 included.
Buttock fitting optional.
Stool T80/A optional.
No leg cut.

107 09

