

81 cm  
2'19<sup>7</sup>/<sub>8</sub>"

166 cm  
5'24<sup>3</sup>/<sub>8</sub>"

80 cm  
2'7<sup>1</sup>/<sub>2</sub>"

62 cm

3'5<sup>3</sup>/<sub>8</sub>"



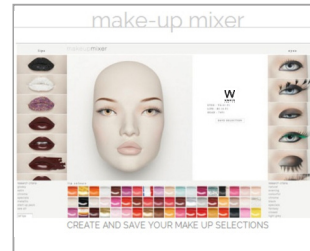
Y3



Y2



Y1 with removable lips F1



<http://www.windowfrance.com/MAKEUP/>



Abstract feet with removable heels ABFT8

WWW.WINDOWFRANCE.COM

COLLECTION 107 SLEEK

Product Reference Sheet

Mensurations cm / Measurements inches

Poitrine / bust	81 cm	31 <sup>7</sup> / <sub>8</sub> "	
Taille / waist	61 cm	24"	
Hanches / hips	91 cm	35 <sup>7</sup> / <sub>8</sub> "	
Talon / heel	10 cm	4"	

Confection / Clothing EUR

Veste / jacket	XS-S / 34-36
Haut / top	XS-S / 34-36
Pantalon / trousers	XS-S / 34-36
Robe / dress	XS-S / 34-36
Sous-vêtements / underwear	85B / 34-36
Pointure / shoes	37-38

Measurements are based on average size of the mannequins in the collection and some positions may vary in size.

Lips not included :  
See our [Cameleon Technical Guide Vol.2](#) for lips options.

Back fitting and special base SMB/30 included.  
Buttock fitting optional.  
Stool T80/A optional.

