



171 cm
5'7³/₈"



87,5 cm
2'10¹/₂"

80 cm

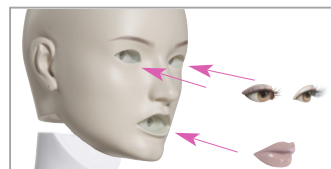
2'7¹/₂"



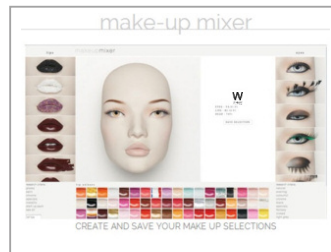
L2



V Nec Cut



X4 (removable make-up F2)



<http://www.windowfrance.com/MAKEUP/>



Special base SMB30

WWW.WINDOWFRANCE.COM

COLLECTION 111 MADEMOISELLE

Product Reference Sheet

Mensurations cm / Measurements inches

Poitrine / bust	80 cm	31 ¹ / ₂ "
Taille / waist	65 cm	25 ⁵ / ₈ "
Hanches / hips	94 cm	37"
Talon / heel	9 cm	3 ¹ / ₂ "



Confection / Clothing EUR

Veste / jacket	XS-S / 34-36
Haut / top	XS-S / 34-36
Pantalon / trousers	XS-S / 34-36
Robe / dress	XS-S / 34-36
Sous-vêtements / underwear	85B / 34-36
Pointure / shoes	38-39

Measurements are based on average size of the mannequins in the collection and some positions may vary in size.

See our Cameleon Technical Guide Vol.2 for head and make-up options.

Support not available.
Back fitting and special base SMB/30 included.
Buttock fitting optional.
Open toes.

111 06

