

# W

WINDOW  
FRANCE

118 cm  
3'10½"



47 cm  
1'6½"

97 cm

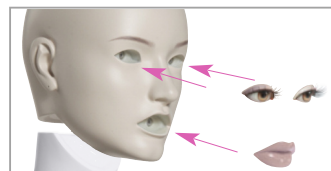
3'2¼"



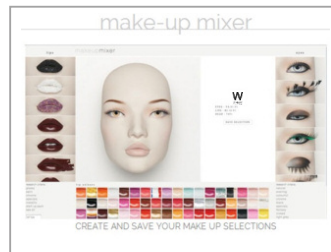
L2



V Nec Cut



X4 (removable make-up F2)



<http://www.windowfrance.com/MAKEUP/>



Special base SMB30

COLLECTION 111 MADEMOISELLE

Product Reference Sheet

Mensurations cm / Measurements inches

Poitrine / bust	80 cm	31½"
Taille / waist	65 cm	25⅝"
Hanches / hips	94 cm	37"
Talon / heel	9 cm	3½"



Confection / Clothing EUR

Veste / jacket	XS-S / 34-36
Haut / top	XS-S / 34-36
Pantalon / trousers	XS-S / 34-36
Robe / dress	XS-S / 34-36
Sous-vêtements / underwear	85B / 34-36
Pointure / shoes	38-39

Measurements are based on average size of the mannequins in the collection and some positions may vary in size.

See our [Cameleon Technical Guide Vol.2](#) for head and make-up options.

Back fitting and special base SMB/30 included.  
Buttock fitting optional.  
Chair C47/A optional.  
No waist cut & open toes.

111 07

