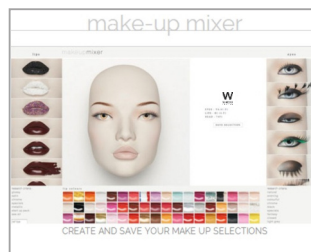


110 cm



<http://www.windowfrance.com/MAKEUP/>



74/F2 (*)

Mensurations cm / Measurements cm

Poitrine / bust	85
Taille / waist	66
Hanches / hips	88
Talon / heel	9



Confection / Clothing EUR

Veste / jacket	XS-S / 34-36
Haut / top	XS-S / 34-36
Pantalon / trousers	XS-S / 34-36
Robe / dress	XS-S / 34-36
Sous vêtement / underwear	85B / 36
Pointure / shoes	38-39

Measurements are based on average size of the mannequins in the collection and some positions may vary in size.

Delivered with two start up make-up kits:

- _ YA.J1.02.06.F2 + B1.O2.F2 (night)
- _ YA.M7.03.04.F2 + B1.R6.F2 (day)

Wig sold separately.
Metal stool T80A optional.
Pierced ears.
Open toes.



(*) See our Cameleon Technical Guide for all make-up options.