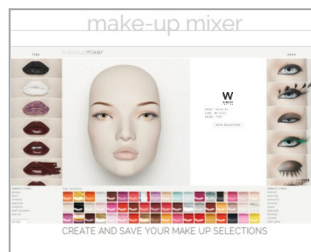


W
WINDOW
 FRANCE

119 cm



85 cm



<http://www.windowfrance.com/MAKEUP/>



74/F1 (*)



Back Fitting



Buttock Fitting



Foot Fitting



Calf Fitting

© Copyright 2016. SARL MAPI WINDOW FRANCE. All rights reserved.

WWW.WINDOWFRANCE.COM



CAMELEON
 COMPONENT
 MAKE-UP
 SYSTEM
 PATENT
 PENDING

COLLECTION 74 VOGUE CAMELEON

Product Reference Sheet

Mensurations cm / Measurements cm

Poitrine / bust	82
Taille / waist	61
Hanches / hips	89
Hauteur / height	184
Talon / heel	9



Confection / Clothing EUR

Veste / jacket	XS-S / 34-36
Haut / top	XS-S / 34-36
Pantalon / trousers	XS-S / 34-36
Robe / dress	XS-S / 34-36
Sous vêtement / underwear	85B / 34
Pointure / shoes	38-39

Measurements are based on average size of the mannequins in the collection and some positions may vary in size.

Delivered with two start up make-up kits:

- _ YA.J1.02.06.F1 + B1.N6.F1 (night)
- _ YA.M7.03.04.F1 + B1.P2.F1 (day)

Wig sold separately.
 Foot and calf fittings included.
 Buttock & back fittings optional.
 Pierced ears.
 No leg cut.
 Pierced ears.
 Open toes.

7410

(*) See our Cameleon Technical Guide for all make-up options.