

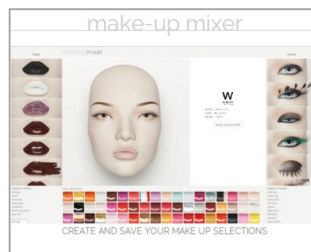
105 cm



21 cm

51 cm

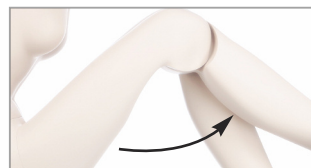
50 cm



<http://www.windowfrance.com/MAKEUP/>



74/F1 (\*)



articulated knees for dressing with trousers.

COLLECTION 74 VOGUE CAMELEON

Product Reference Sheet

Mensurations cm / Measurements cm

Poitrine / bust	82
Taille / waist	61
Hanches / hips	89
Hauteur / height	184
Talon / heel	9



Confection / Clothing EUR

Veste / jacket	XS-S / 34-36
Haut / top	XS-S / 34-36
Pantalon / trousers	XS-S / 34-36
Robe / dress	XS-S / 34-36
Sous vêtement / underwear	85B / 34
Pointure / shoes	38-39

Measurements are based on average size of the mannequins in the collection and some positions may vary in size.

Delivered with two start up make-up kits:

- \_ YA.J1.02.06.F1 + B1.N6.F1 (night)
- \_ YA.M7.03.04.F1 + B1.P2.F1 (day)

Wig sold separately.  
metal stool T21A optional.  
Pierced ears.  
Open toes.



(\*) See our Cameleon Technical Guide for all make-up options.