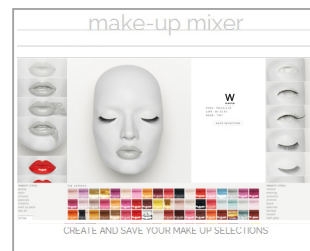
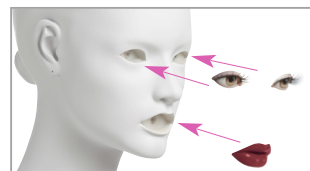


W
WINDOW
 FRANCE



To select your make-up, see our MAKE-UP MIXER :
<http://www.windowfrance.com/MAKEUP/>



75/F2



Back Fitting



Buttock Fitting



Foot Fitting



Calf Fitting

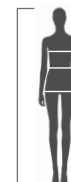
© Copyright 2024. SARL MAPI WINDOW FRANCE. All rights reserved.

COLLECTION 75 VOGUE CAMELEON

Product Reference Sheet

Measurements cm

Shoulders	40
Bust	81
Waist	61
Hips	87
Height	184
Heel	9



Clothing

XS-S / 34-36 EUR Size 2-4 US
 Shoes 40

Magnet pen included.
 Foot and calf fittings included.
 Buttock & back fittings optional.
 Pierced ears.
 Open toes.

Delivered with two start up make-up kits:

- _ YA.15.01.03.F2 + B1.S3.F2 (night)
- _ YA.YJ.15.00.00.F2 + B1.15.F2 (day)

Check our Cameleon Technical Guide for all the make-up options.

Measurements are based on average size of the mannequins in the collection and some positions may vary in size.

7502

WWW.WINDOWFRANCE.COM



CAMELEON
 COMPONENT
 MAKE-UP
 SYSTEM
 PATENT
 PENDING