

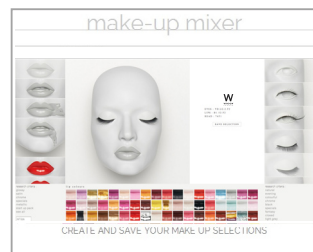
105 cm



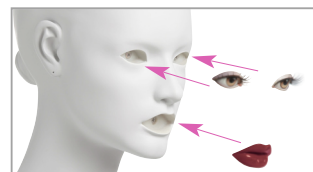
21 cm

51 cm

50 cm



To select your make-up, see our MAKE-UP MIXER :
<http://www.windowfrance.com/MAKEUP/>



75/F2



articulated knees for dressing with trousers.

COLLECTION 75 VOGUE CAMELEON

Product Reference Sheet

Measurements cm

Shoulders	40
Bust	81
Waist	61
Hips	87
Heel	9



Clothing

XS-S / 34-36 EUR Size 2-4 US
Shoes 40

Magnet pen included.
Metal stool T21A optional.
Pierced ears.
Open toes.

Delivered with two start up make-up kits:

- _ YA.15.01.03.F2 + B1.S3.F2 (night)
- _ YA.YJ.15.00.00.F2 + B1.15.F2 (day)

Check our Cameleon Technical Guide for all the make-up options.

Measurements are based on average size of the mannequins in the collection and some positions may vary in size.

