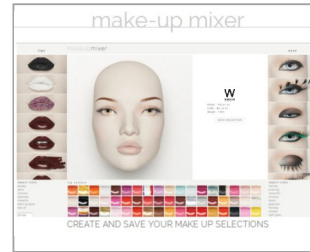




52 cm



<http://www.windowfrance.com/MAKEUP/>



K6



F1/F2



K5



K4



realistic feet



sculpted shoes

See our Cameleon Technical Guide for face and make-up options.

© Copyright 2016. SARL MAPI WINDOW FRANCE. All rights reserved.

COLLECTION 81 ABSOLUTE CAMELEON

Product Reference Sheet

Mensurations cm / Measurements cm

Poitrine / bust	78
Taille / waist	63
Hanches / hips	90
Hauteur / height	186
Talon / heel	9



Confection / Clothing EUR

Veste / jacket	XS-S / 34-36
Haut / top	XS-S / 34-36
Pantalon / trousers	XS-S / 34-36
Robe / dress	XS-S / 34-36
Sous-vêtements / underwear	80B / 34
Pointure / shoes	38-39

Measurements are based on average size of the mannequins in the collection and some positions may vary in size.

- Realistic feet version : Foot & calf fittings included. Buttock & back fittings optional. Open toes. Right leg with spring fitting for easy dressing.
- Sculpted shoes version : Foot fitting only. Right leg with spring fitting for easy dressing.

8120

