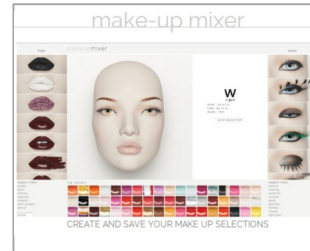




100 cm



<http://www.windowfrance.com/MAKEUP/>



K6



F1/F2



K5



K4



realistic feet

See our Cameleon Technical Guide for face and make-up options.

Mensurations cm / Measurements cm

|                 |     |
|-----------------|-----|
| Poitrine / bust | 78  |
| Taille / waist  | 63  |
| Hanches / hips  | 90  |
| Talon / heel    | 2.5 |



Confection / Clothing EUR

|                            |              |
|----------------------------|--------------|
| Veste / jacket             | XS-S / 34-36 |
| Haut / top                 | XS-S / 34-36 |
| Pantalon / trousers        | XS-S / 34-36 |
| Robe / dress               | XS-S / 34-36 |
| Sous-vêtements / underwear | 80B / 34     |
| Pointure / shoes           | 38-39        |

Measurements are based on average size of the mannequins in the collection and some positions may vary in size.

Realistic feet version only. Open toes.