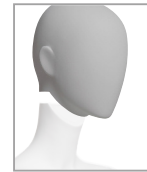




52 cm



L2



L4



L3



L5



realistic feet



sculpted shoes

See our Cameleon Technical Guide  
for head and lip options.

Mensurations cm / Measurements cm

Poitrine / bust	78
Taille / waist	63
Hanches / hips	90
Hauteur / height	186
Talon / heel	9



Confection / Clothing EUR

Veste / jacket	XS-S / 34-36
Haut / top	XS-S / 34-36
Pantalon / trousers	XS-S / 34-36
Robe / dress	XS-S / 34-36
Sous-vêtements / underwear	80B / 34
Pointure / shoes	38-39

Measurements are based on average size of the mannequins in the collection and some positions may vary in size.

- Realistic feet version : Foot & calf fittings included. Buttock & back fittings optional. Open toes. Right leg with spring fitting for easy dressing.
- Sculpted shoes version : Foot fitting only. Right leg with spring fitting for easy dressing.

