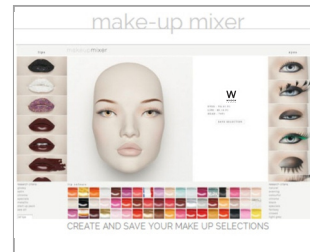


M3

M6



realistic feet sculpted shoes



<http://www.windowfrance.com/MAKEUP/>

COLLECTION 83 ABSOLUTE CAMELEON

Product Reference Sheet

Mensurations cm / Measurements cm

Poitrine / bust	78
Taille / waist	63
Hanches / hips	90
Hauteur / height	186
Talon / heel	9



Confection / Clothing EUR

Veste / jacket	XS-S / 34-36
Haut / top	XS-S / 34-36
Pantalon / trousers	XS-S / 34-36
Robe / dress	XS-S / 34-36
Sous-vêtements / underwear	80B / 34
Pointure / shoes	38-39

Measurements are based on average size of the mannequins in the collection and some positions may vary in size.

- Realistic feet version : Foot & calf fittings included. Buttock & back fittings optional. Open toes.
- Sculpted shoes version : Foot fitting only.

Lips not included :
See our [Cameleon Technical Guide Vol.2](#) for lips options.

8302

