

65 cm

145 cm



65 cm



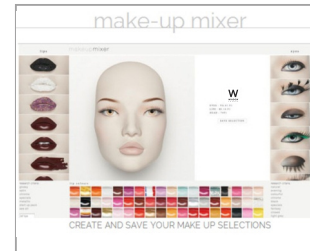
M3



M6



realistic feet



<http://www.windowfrance.com/MAKEUP/>

COLLECTION 83 ABSOLUTE CAMELEON

Product Reference Sheet

Mensurations cm / Measurements cm

Poitrine / bust	78
Taille / waist	63
Hanches / hips	90
Talon / heel	2,5



Confection / Clothing EUR

Veste / jacket	XS-S / 34-36
Haut / top	XS-S / 34-36
Pantalon / trousers	XS-S / 34-36
Robe / dress	XS-S / 34-36
Sous-vêtements / underwear	80B / 34
Pointure / shoes	38-39

Measurements are based on average size of the mannequins in the collection and some positions may vary in size.

Realistic feet version only. Shoulders magnetic fittings for easy dressing. Open toes.

Lips not included :
See our [Cameleon Technical Guide Vol.2](#) for lips options.

8324

